

First Responder Program



SoCalGas

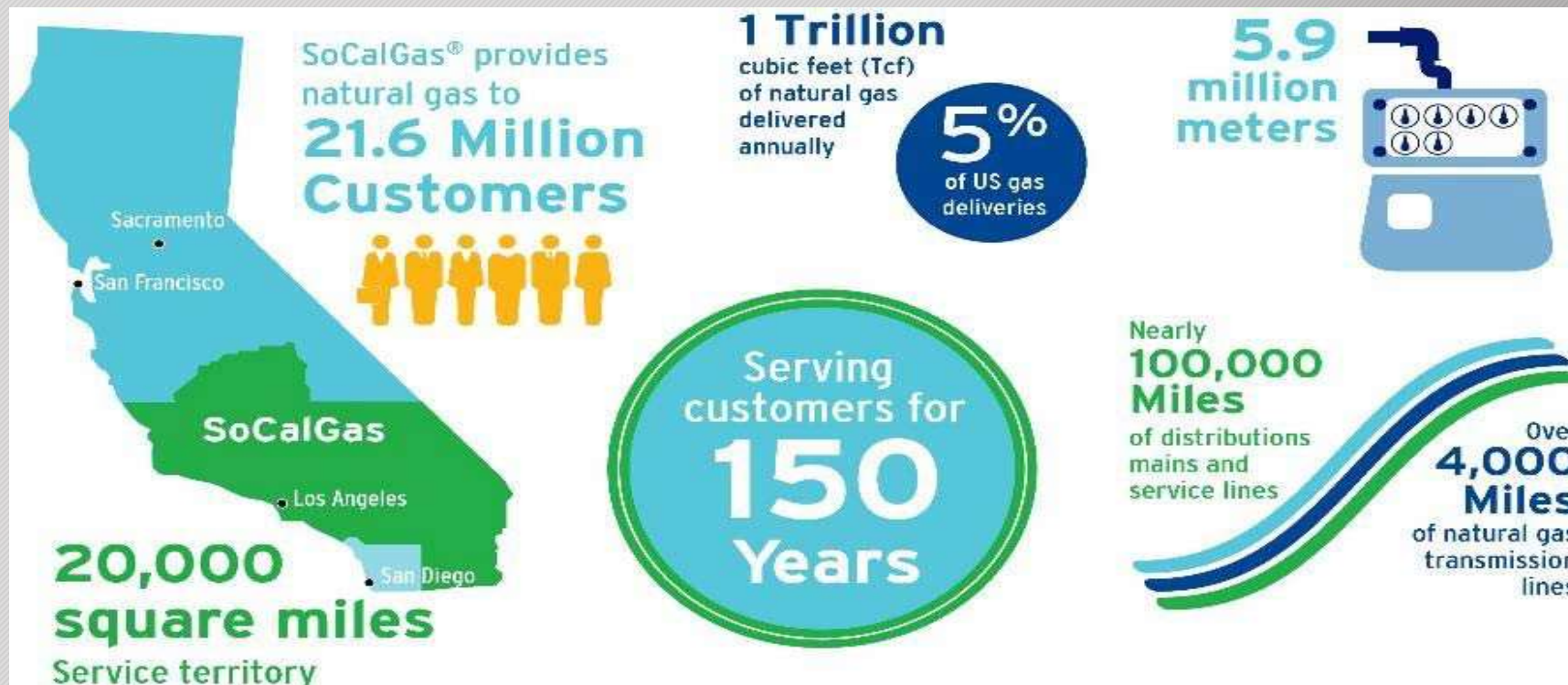
A  Sempra Energy utility

Presentation Overview

- SoCalGas Overview
- Pipeline Purpose and Reliability
- SoCalGas Pipelines and Location
- High Consequence Areas (HCA's) and Integrity Management
- Incident Response
- Leak Recognition, Detection and Damage Prevention Measures
- Emergency Preparation, Training and Communication

SoCalGas Overview

Clean - Safe - Reliable

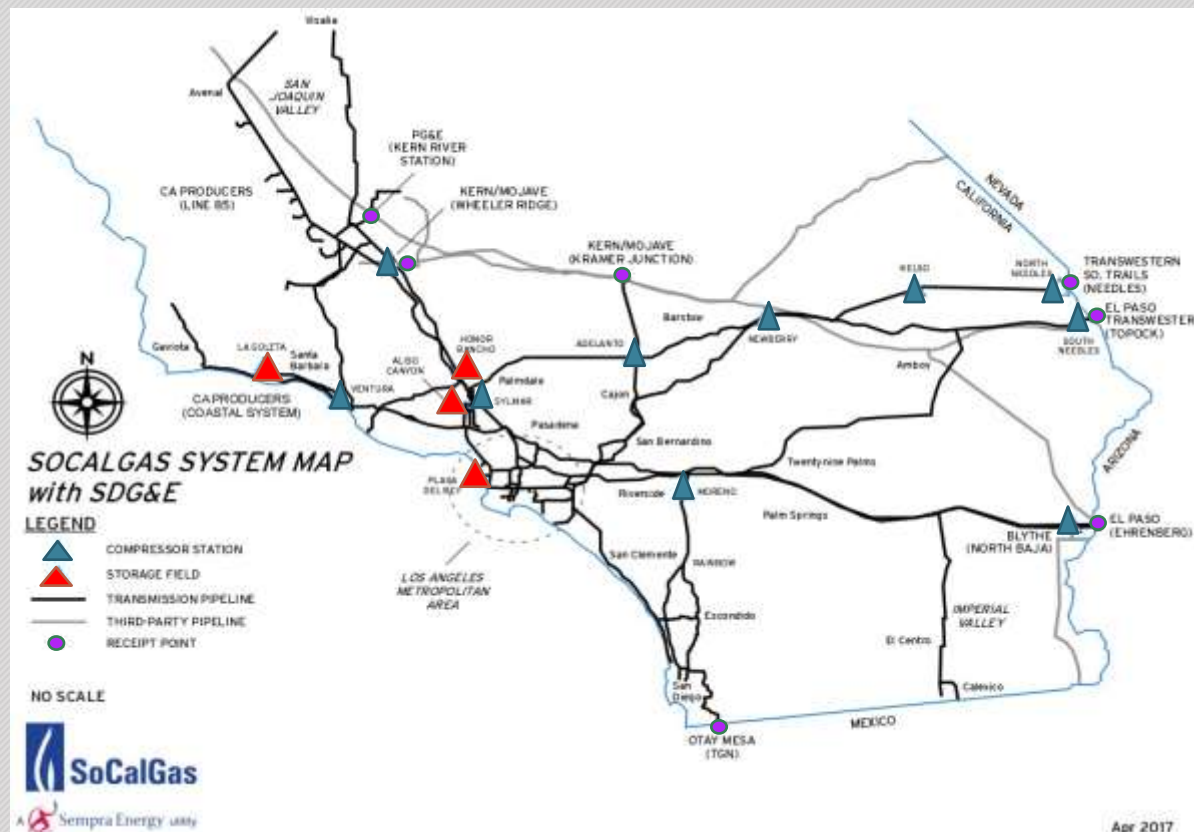


Pipeline Purpose and Reliability

- Natural gas flows into SoCalGas system through receipt points.
- Delivered to customers, stored in pipelines, or injected at storage fields.
- System managed 24/7 by Gas Control System Operator, who can remotely adjust pressure, activate facilities and respond to alerts.



SoCalGas Pipelines and Location



SoCalGas

<http://www.socalgas.com>

National Pipeline Mapping System (NPMS)

<https://www.npms.phmsa.dot.gov/>

National Association of State Fire Marshal's

<https://www.firemarshals.org/>

Pipeline Association for Public Awareness

<https://pipelineawareness.org/>

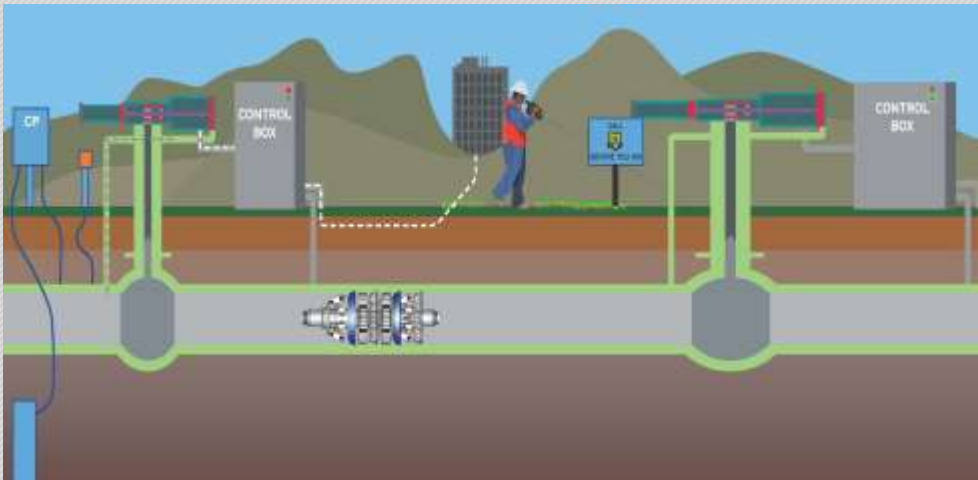
High Consequence Areas



- **20 or more structures intended for human occupancy**
- **Buildings with populations of limited mobility**
- **Buildings that would be hard to evacuate (e.g. nursing homes, schools)**
- **Buildings and outside areas occupied by more than 20 persons on a specified minimum number of days each year**

Integrity Management

Routinely Inspected



- Patrolling is a visible inspection of gas pipelines to observe surface conditions on or within the pipeline's right-of-way.
- A Smart pig uses cups, discs, scrapers, brushes and/or magnets to remove dirt, rust, mill scale, corrosion products, and other debris from the pipeline. It is also used to facilitate inspection of the pipeline.

Aerial Inspection



- SoCalGas has been piloting new aerial drones that provide high definition imagery.
- Drones assist with pipeline inspections when company personnel is unable to fiscally reach and inspect the piping
- New Drones are outfitted with methane detection equipment that assists on identifying leakage on hard to reach pipelines.

SoCalGas' Leak Detection Equipment



Department

- Sensit: Customer Service Field
- Detecto Pak-Infrared (DPIR): Gas Operations

3rd Party Contractor Hits a Natural Gas Line











Damage Prevention - Underground Service Alert

SoCalGas will continue to provide safe reliable service during the COVID-19 pandemic. We are continuing to respond to damaged natural gas lines in order to mitigate the danger and will respond to all customer generated emergencies.

“Contractors and Customers must call 811 prior to excavating.”



Utility Response: Markings

	Delineations/Proposed Dig Site
	Temporary Survey Marks
	Electric Power
	Gas, Oil, Steam, Chemical
	Cable/Communications
	Potable Water
	Sewers/Storm Drains
	Reclaimed Water

2018 Dig-in Damage Totals

'Costs vary from the type of damage and the work needed to be performed to mitigate the damage'

2018 Damages			
Excavator Type	No USA Ticket	USA Ticket	Grand Total
Contractor - 3rd Party	1451	926	2377
Occupant	212	18	230
Company Contractor	34	52	86
Unknown/Other	61	16	77
Municipality	4	41	45
Developer	35	5	40
Company	14	25	39
Utility	6	26	32
Farmer	4	0	4
County	2	1	3
Grand Total	1823	1110	2933

60%* of damages have NO USA ticket

40%* of damages did have USA

Emergency Responder – Responding to Incident



Emergency Responder Incident Response and Hazard Awareness

- Approach incident cautiously and stay upwind
- Establish a safety perimeter
- Evacuate the public 150'-300' or greater if necessary
- Attempt to control ignition sources only if it is safe to do so
- **DO NOT** operate main line gas valves
- **DO NOT** attempt to control blowing gas
- Call SoCalGas immediately on the dedicated first responder line: **(INFO REDACTED)**
- Ask to speak to or request a call back from the responding supervisor if needed

Natural Gas Leak Recognition

Distinctive gas odor

**Dirt blowing
from hole in
the ground**

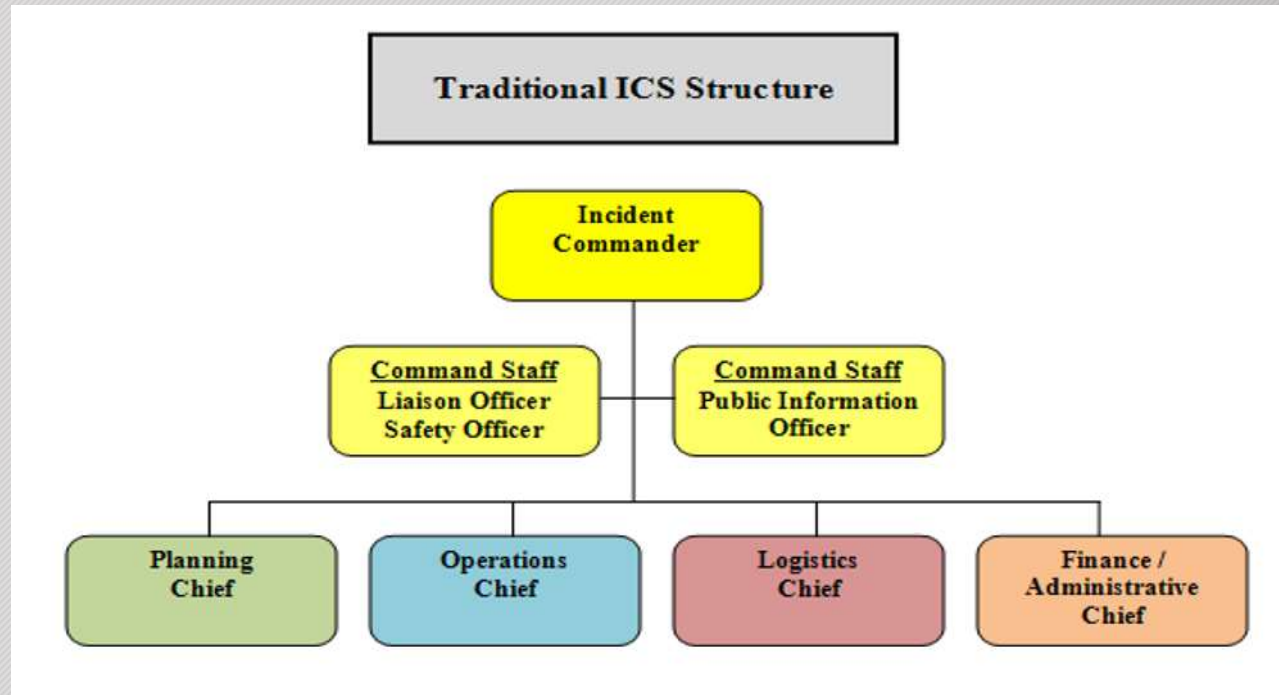
**Fire on top,
or out of the ground**

Dead vegetation

**Bubbling in pools
of water**

**Loud roar, hiss, or
whistling**

SoCalGas Emergency Incident Response



Emergency Response Communication

We ask that you continue to call SoCalGas on the dedicated First Responder number at **(INFO REDACTED)** when responding to emergencies that involve SoCalGas facilities or when responding to an emergency where natural gas is suspected to be involved.

- Natural Gas Leaks
- Explosions
- Natural Gas Area Odors
- Field Gas Odors
- Structure Fires
- Carbon Monoxide (suspected or verified)
- Suspicious Activity around SoCalGas natural gas line or property
- When assistance is required

If you have questions, visit socalgas.com/coronavirus

Emergency Response Preparedness and Training



Annual Functional Exercise



SoCalGas responds using Incident Command Structure



FD and PD participation in SoCalGas drills and exercises



